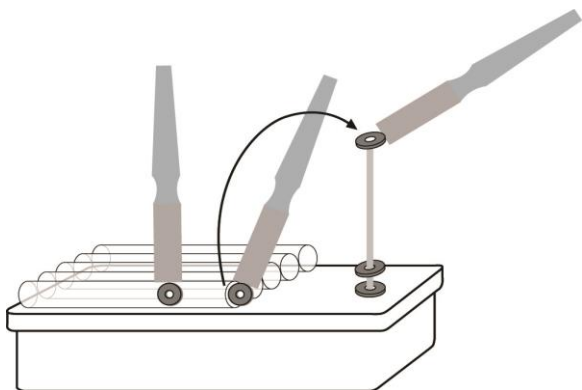


TASK 34 - POSITIVE ATTRACTION



Up to five plastic containers can be placed on the surface of the Shoebox lid (open end closest to the standing dowel). Place the magnetic washers in the plastic container farthest away from the opening. The student uses the magnetic wand to attract the washer, moving along the surface of the tube to the opening. Once clear of the tube and using the wand as a tool, the student catches the washer on the tip of the dowel, releasing it down the dowel as the wand is pulled away. If this manner of putting the washer on the dowel is too difficult, have the student use the edge of the wand to attract the washer. Sliding it along in this manner and, once free of the tube, it will be hanging off the edge of the wand. Experiment!

If the wand is used in reverse fashion each time a washer is removed from the tubes, a floating effect will be noticed as the washers interact with each other on the dowel. To help the student understand how to reverse the wand each time, try writing a “#1” on one side of the wand head and a “#2” on the other side. Number each tube correspondingly: 1, 2, 1, 2, 1. By matching the numbers, the student will create the interesting repelling action on the dowel.

ASSEMBLY: Apply the two Velcro strips widthwise, extending one between each set of guide holes provided on the lid. After inserting the dowel into the opening, apply putty to the bottom end for a firm foundation. **Please supervise the use of this activity with your students.**

CONTENTS:

- (1) Shoebox base
- (1) Shoebox lid
- (2) 7" velcro strips
- (1) ¼" x 10" dowel
- (1) magnetic wand
- (6) magnetic washers
- (5) plastic tubes, each with 2 velcro coins attached